



# GMT MONTHLY MEMBERSHIP PROGRESS REPORT

Results as of: 6/30/2020

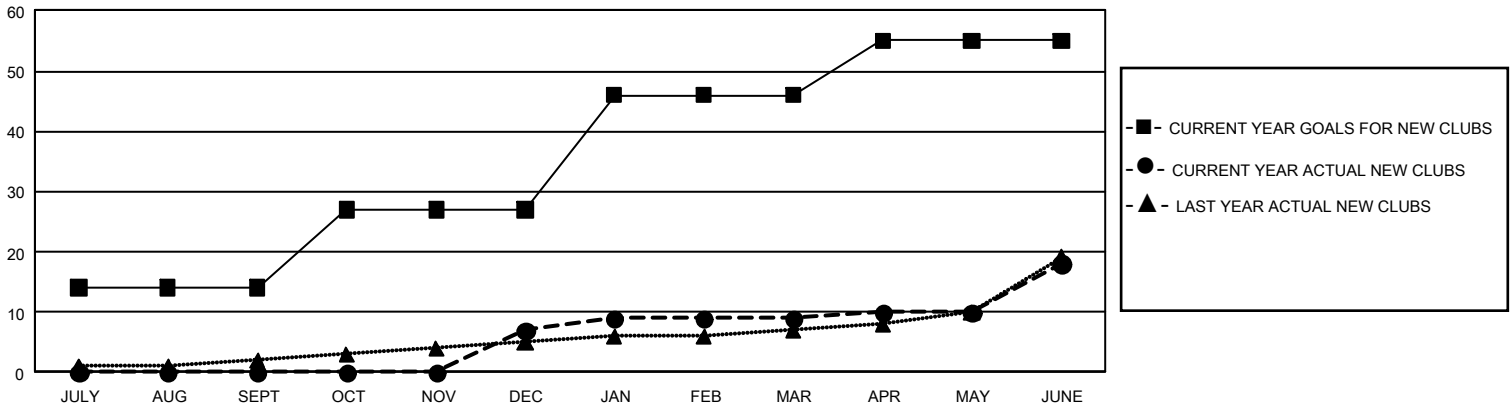
## GMT Constitutional Area 1, Group B

GMT: OPEN

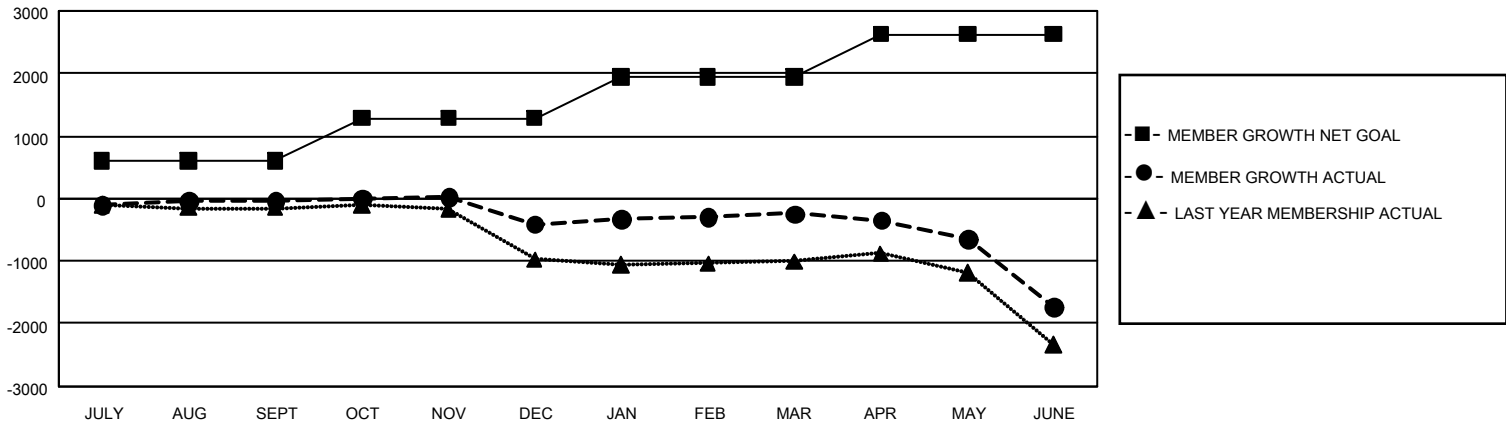
REPORT DOES NOT INCLUDE CLUBS IN UNDISTRICTED AREAS.

Clubs				Members			
RESULTS FOR 2019-2020				RESULTS FOR 2019-2020			
QUARTER	NEW CLUB GOAL	NEW CLUBS	DROPPED CLUBS	QUARTER	MEMBER GROWTH NET GOAL	MEMBER GROWTH ACTUAL	DROPPED MEMBERS ACTUAL (including transfers)
JULY/AUG/SEPT	42	0	25	JULY/AUG/SEPT	1,821	1,205	1,074
OCT/NOV/DEC	39	7	15	OCT/NOV/DEC	2,025	1,128	1,391
JAN/FEB/MAR	57	2	2	JAN/FEB/MAR	1,989	1,088	830
APR/MAY/JUNE	27	9	20	APR/MAY/JUNE	2,046	892	2,219

GOALS AND ACTUAL NEW CLUBS CUMULATIVE



GOALS AND ACTUAL MEMBERS CUMULATIVE



DROPPED CLUBS: 61	817 CLUBS OF 1,327 ADDED 1 OR MORE NEW MEMBERS	<u>GENDER DISTRIBUTION</u>	
<u>DROPPED MEMBERS</u>		MALE	20,104 (62.13%)
DECEASED	439	FEMALE	12,255 (37.87%)
CLUB CANCELLED	331	TOTAL FAMILY UNIT MEMBERS 6,195	
OTHER	4,741	FAMILY MEMBERS PAYING HALF DUES 3,221	
TOTAL	5,511		

[CLICK HERE FOR CUMULATIVE MEMBERSHIP DATA](#)